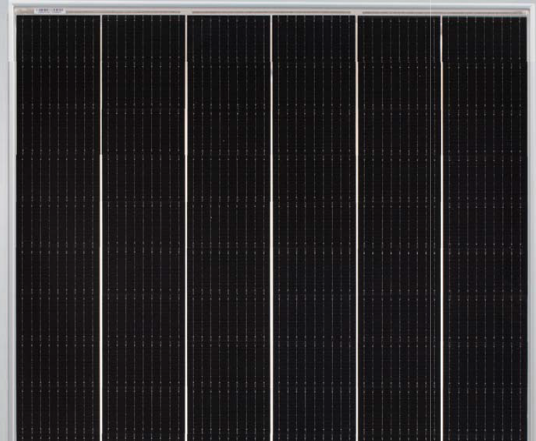


# Tiger Mono-facial 450-470 Watt

Tiling Ribbon (TR) Technology

(Made in China)

N-Type



## KEY FEATURES



### TR technology + Half Cell

TR technology with Half cell aims to eliminate the cell gap to increase module efficiency (mono-facial up to 20.93%)



### 9BB instead of 5BB

9BB technology decreases the distance between bus bars and finger grid line which is benefit to power increase.



### Higher lifetime Power Yield

1% first year degradation,  
0.4% linear degradation



### Best Warranty

15 year product warranty,  
30 year linear power warranty



### Better low-light performance

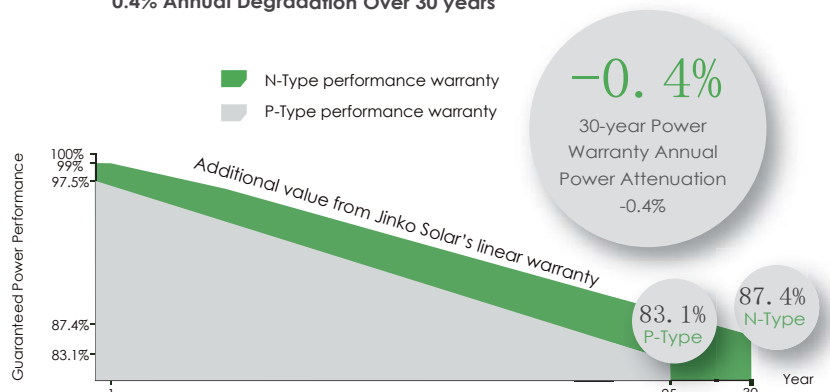
Excellent performance in low-light environments  
(e.g. early morning, dusk, and cloud, etc.)



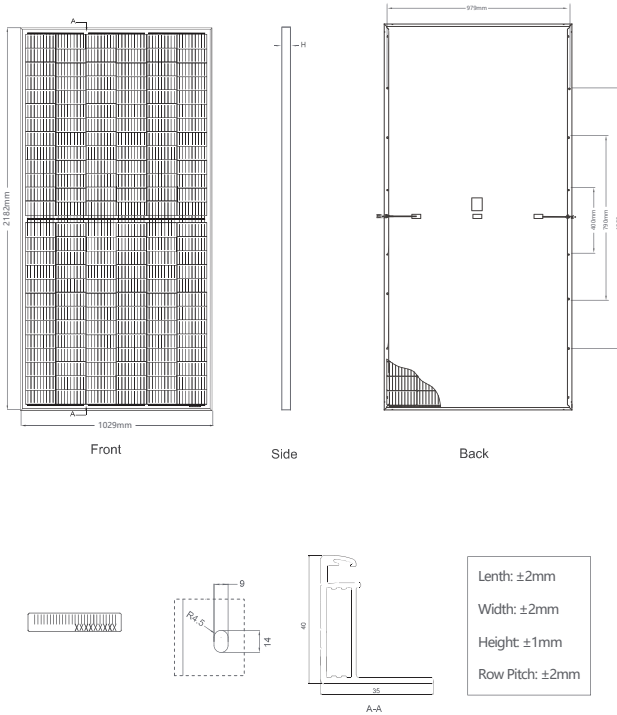
- ISO9001:2015, ISO14001:2015, OHSAS18001 certified factory
- IEC61215, IEC61730 certified product

## LINEAR PERFORMANCE WARRANTY

15 Year Product Warranty 30 Year Linear Power Warranty  
0.4% Annual Degradation Over 30 years



## Engineering Drawings

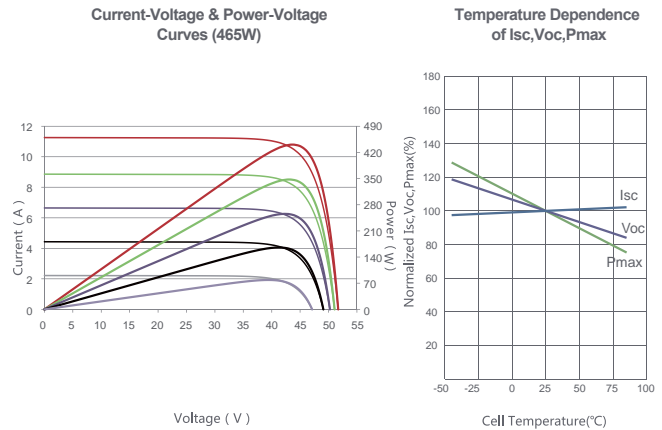


## Packaging Configuration

( Two pallets = One stack )

27pcs/pallets, 54pcs/stack, 540pcs/ 40'HQ Container

## Electrical Performance & Temperature Dependence



## Mechanical Characteristics

Cell Type	N type Mono-crystalline
No. of cells	156 (2×78)
Dimensions	2182×1029×40mm (85.91×40.51×1.57 inch)
Weight	26.1 kg (57.54 lbs)
Front Glass	3.2mm, Anti-Reflection Coating, High Transmission, Low Iron, Tempered Glass
Frame	Anodized Aluminium Alloy
Junction Box	IP67 Rated
Output Cables	TUV 1×4.0mm <sup>2</sup> (+): 290mm, (-): 145 mm or Customized Length
Connector	Staubli MC4, MC4-EVO2; JK03M/1B, JK03M2/1B, Jinko PV material Staubli MC4, MC4-EVO2; JK03M/2B, JK03M2/2B, Jinko PV material
Fire Rating	Class C

## SPECIFICATIONS

Module Type	JKM450N-7RL3		JKM455N-7RL3		JKM460N-7RL3		JKM465N-7RL3		JKM470N-7RL3	
	STC	NOCT	STC	NOCT	STC	NOCT	STC	NOCT	STC	NOCT
Maximum Power (Pmax)	450Wp	336Wp	455Wp	339Wp	460Wp	343Wp	465Wp	347Wp	470Wp	350Wp
Maximum Power Voltage (Vmp)	42.90V	39.29V	43.01V	39.40V	43.12V	39.51V	43.22V	39.67V	43.32V	39.78V
Maximum Power Current (Imp)	10.49A	8.54A	10.58A	8.61A	10.67A	8.68A	10.76A	8.74A	10.85A	8.81A
Open-circuit Voltage (Voc)	51.50V	48.61V	51.60V	48.70V	51.70V	48.80V	51.90V	48.99V	52.10V	49.18V
Short-circuit Current (Isc)	11.32A	9.14A	11.41A	9.22A	11.50A	9.29A	11.59A	9.36A	11.68A	9.43A
Module Efficiency STC (%)	20.04%		20.26%		20.49%		20.71%		20.93%	
Operating Temperature(°C)	-40°C~+85°C									
Maximum system voltage	1000/1500VDC (IEC)									
Maximum series fuse rating	20A									
Power tolerance	0~+3%									
Temperature coefficients of Pmax	-0.34%/°C									
Temperature coefficients of Voc	-0.28%/°C									
Temperature coefficients of Isc	0.048%/°C									
Nominal operating cell temperature (NOCT)	45±2°C									

\* STC: Irradiance 1000W/m<sup>2</sup> Cell Temperature 25°C

AM=1.5

NOCT: Irradiance 800W/m<sup>2</sup> Ambient Temperature 20°C

AM=1.5

Wind Speed 1m/s

The company reserves the final right for explanation on any of the information presented hereby. TR JKM450-470N-7RL3-(V)-A1-EN